



Lakeview Lodge

Supportive Seniors Housing

9432 113th Avenue

Clairmont, AB

587-771-9432



72 Full Service Unit Seniors Lodge

Comfort • Care • Community

Enjoy a welcoming, worry-free lifestyle with 24-hour staffing and personalized support in a warm, home-like setting.

Included in the Monthly Rate

- Three delicious freshly prepared meals daily plus morning, afternoon and evening snacks
- Weekly housekeeping and linen laundry
- Regular recreational and social activities
- Access to nursing, personal care, and medication assistance through AHS Home Care



Amenities

Fitness Room • Hair Salon • Library • Games/Craft Room • Multi-Purpose Room with Adjoining Family Kitchen • Laundry Located on Each Floor Free to Residents • Five Elevators • Parking Available at Monthly Rate • Secure Steel Frame Building with 24 Hour Security, Emergency Call System, Smoke Detectors & Sprinkler System • Transportation for Shopping, Banking and Recreational Outings for a Nominal Ridership Fee

"We provide quality housing that services the needs of our seniors, families and individuals."



Lakeview Lodge

Supportive Seniors Housing

9432 113th Avenue

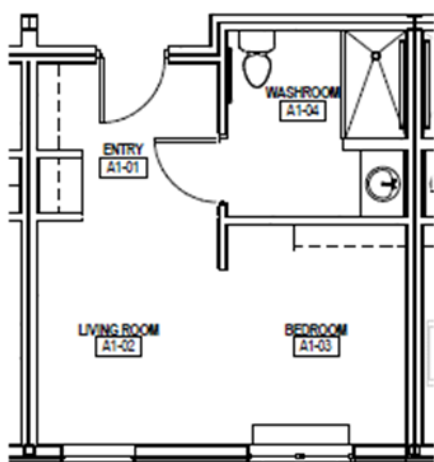
Clairmont, AB

587-771-9432

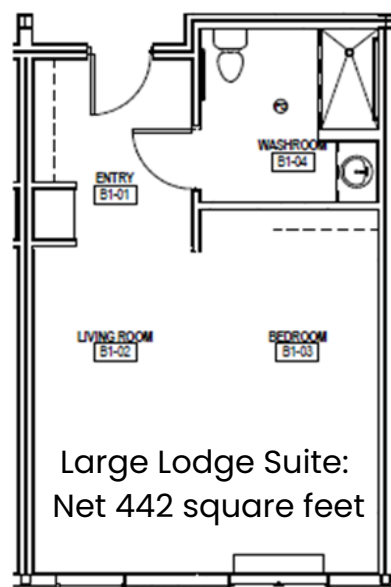
Suite Features

All rents are based on income, reviewed annually and are subject to change

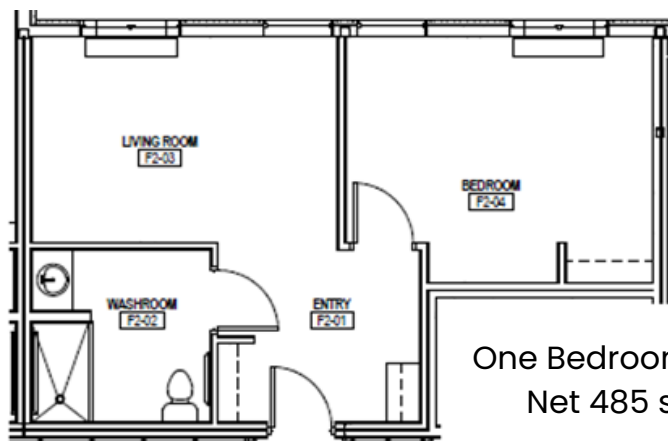
Individually controlled thermostats for personalized comfort · Private three-piece bathroom in every suite with accessible tiled shower · Window coverings provided · All basic utilities and cable included · No charge Laundry Facilities for residents or optional personal laundry service available for a monthly fee



Lodge Suite:
Net 293 square feet



Large Lodge Suite:
Net 442 square feet



One Bedroom Lodge Suite
Net 485 square feet

Everything you need for comfort, convenience, and connection — all under one roof.

To learn more about the property call
780-532-2905 ext 110

"We provide quality housing that services the needs of our seniors, families and individuals."